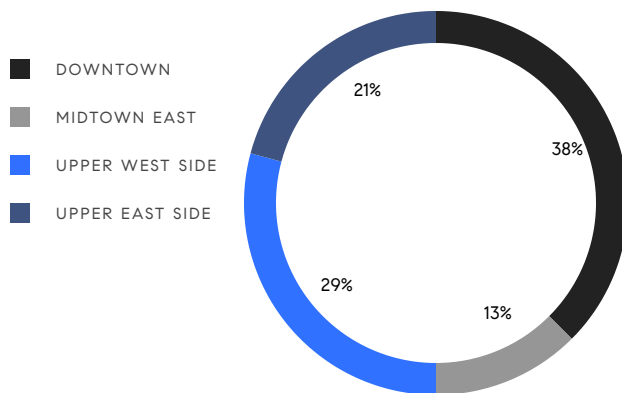


MANHATTAN WEEKLY LUXURY REPORT



620 PARK AVENUE, PH

RESIDENTIAL CONTRACTS
\$5 MILLION AND UP



24

CONTRACTS SIGNED
THIS WEEK

\$279,855,000

TOTAL CONTRACT VOLUME

The Manhattan luxury real estate market, defined as all properties priced \$5M and above, saw 24 contracts signed this week, made up of 19 condos, and 5 co-ops. The previous week saw 17 deals. For more information or data, please reach out to a Compass agent.

\$11,660,625

AVERAGE ASKING PRICE

\$8,295,000

MEDIAN ASKING PRICE

\$3,146

AVERAGE PPSF

3%

AVERAGE DISCOUNT

\$279,855,000

TOTAL VOLUME

155

AVERAGE DAYS ON MARKET

Unit PHW at 25 Bond Street in NoHo entered contract this week, with a last asking price of \$39,500,000. Built in 2005, this penthouse condo spans 6,358 square feet with 4 beds and 4 baths. It features private elevator access, custom millwork, Venetian plaster walls, hardwood floors, a 43.5-foot-wide living room with wood-burning fireplace, floor-to-ceiling windows, abundant outdoor space including a roof terrace, and much more. The building provides a 24-hour concierge, a gym, a walled garden, and many other amenities.

Also signed this week was Unit PH56 at 56 Leonard Street in TriBeCa, with a last asking price of \$36,500,000. Built in 2015, this penthouse condo spans 5,858 square feet with 4 beds and 4 baths. It features high ceilings, two terraces, city and water views, an open-concept kitchen/dining/great room area, a primary bedroom with sitting area, dual walk-in closets and en-suite bath, a home gym, and much more.

19

CONDO DEAL(S)

5

CO-OP DEAL(S)

0

TOWNHOUSE DEAL(S)

\$12,664,474

AVERAGE ASKING PRICE

\$7,846,000

AVERAGE ASKING PRICE

\$0

AVERAGE ASKING PRICE

\$8,450,000

MEDIAN ASKING PRICE

\$6,295,000

MEDIAN ASKING PRICE

\$0

MEDIAN ASKING PRICE

\$3,229

AVERAGE PPSF

N/A

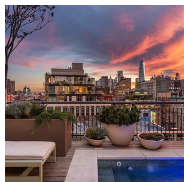
AVERAGE PPSF

3,544

AVERAGE SQFT

N/A

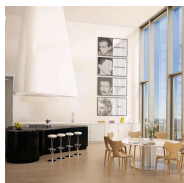
AVERAGE SQFT



25 BOND ST #PHW

Noho

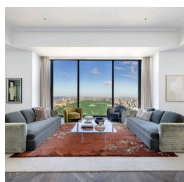
TYPE	CONDO	STATUS	CONTRACT	ASK	\$39,500,000	INITIAL	\$39,500,000
SQFT	6,358	PPSF	\$6,213	BEDS	4	BATHS	4
FEEES	\$32,487	DOM	58				



56 LEONARD ST #PH56

Tribeca

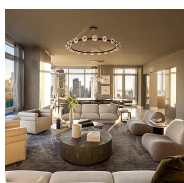
TYPE	CONDO	STATUS	CONTRACT	ASK	\$36,500,000	INITIAL	N/A
SQFT	5,858	PPSF	\$6,231	BEDS	4	BATHS	4
FEEES	\$8,508	DOM	N/A				



111 WEST 57TH ST #49

Midtown

TYPE	CONDO	STATUS	CONTRACT	ASK	\$24,250,000	INITIAL	\$24,250,000
SQFT	4,492	PPSF	\$5,399	BEDS	3	BATHS	3
FEEES	\$25,201	DOM	13				



200 AMSTERDAM AVE #41

Upper West Side

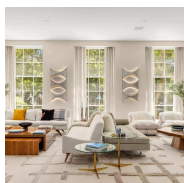
TYPE	CONDO	STATUS	CONTRACT	ASK	\$22,500,000	INITIAL	\$23,500,000
SQFT	4,672	PPSF	\$4,816	BEDS	4	BATHS	4.5
FEEES	\$24,799	DOM	396				



740 PARK AVE #6/7C

Lenox Hill

TYPE	COOP	STATUS	CONTRACT	ASK	\$14,990,000	INITIAL	\$14,990,000
SQFT	N/A	PPSF	N/A	BEDS	5	BATHS	6
FEEES	\$20,749	DOM	134				

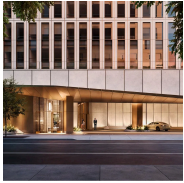


21 EAST 26TH ST #2

Nomad

TYPE	CONDO	STATUS	CONTRACT	ASK	\$12,995,000	INITIAL	\$12,995,000
SQFT	4,967	PPSF	\$2,616	BEDS	4	BATHS	5.5
FEEES	\$16,973	DOM	176				

Compass is a licensed real estate broker and abides by Equal Housing Opportunity laws. All material presented herein is intended for informational purposes only. Information is compiled from sources deemed reliable but is subject to errors, omissions, changes in price, condition, sale, or withdrawal without notice. No statement is made as to the accuracy of any description. All measurements and square footages are approximate. This is not intended to solicit property already listed. Nothing herein shall be construed as legal, accounting or other professional advice outside the realm of real estate brokerage.



50 WEST 66TH ST #6D

Upper West Side

TYPE	CONDO	STATUS	CONTRACT	ASK	\$11,600,000	INITIAL	\$11,600,000
SQFT	3,889	PPSF	\$2,983	BEDS	5	BATHS	5
FEES	N/A	DOM	N/A				



555 WEST 22ND ST #10BW

Chelsea

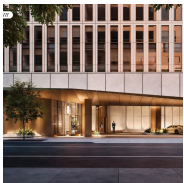
TYPE	CONDO	STATUS	CONTRACT	ASK	\$9,950,000	INITIAL	\$10,650,000
SQFT	3,015	PPSF	\$3,301	BEDS	4	BATHS	4.5
FEES	\$12,158	DOM	49				



255 EAST 77TH ST #28A

Upper East Side

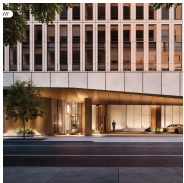
TYPE	CONDO	STATUS	CONTRACT	ASK	\$9,015,000	INITIAL	\$8,955,000
SQFT	2,954	PPSF	\$3,052	BEDS	4	BATHS	4
FEES	\$8,622	DOM	63				



50 WEST 66TH ST #16C

Upper West Side

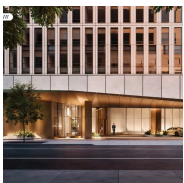
TYPE	CONDO	STATUS	CONTRACT	ASK	\$8,965,000	INITIAL	\$8,965,000
SQFT	3,223	PPSF	\$2,782	BEDS	4	BATHS	4.5
FEES	\$8,813	DOM	1				



50 WEST 66TH ST #6F

Upper West Side

TYPE	CONDO	STATUS	CONTRACT	ASK	\$8,450,000	INITIAL	\$8,450,000
SQFT	2,901	PPSF	\$2,913	BEDS	3	BATHS	3
FEES	N/A	DOM	1				



50 WEST 66TH ST #5F

Upper West Side

TYPE	CONDO	STATUS	CONTRACT	ASK	\$8,340,000	INITIAL	\$7,665,000
SQFT	2,901	PPSF	\$2,875	BEDS	3	BATHS	3
FEES	N/A	DOM	6				

Compass is a licensed real estate broker and abides by Equal Housing Opportunity laws. All material presented herein is intended for informational purposes only. Information is compiled from sources deemed reliable but is subject to errors, omissions, changes in price, condition, sale, or withdrawal without notice. No statement is made as to the accuracy of any description. All measurements and square footages are approximate. This is not intended to solicit property already listed. Nothing herein shall be construed as legal, accounting or other professional advice outside the realm of real estate brokerage.



285 LAFAYETTE ST NY #3E

Nolita

TYPE	CONDO	STATUS	CONTRACT	ASK	\$8,250,000	INITIAL	\$9,000,000
SQFT	3,175	PPSF	\$2,599	BEDS	3	BATHS	3.5
FEES	\$5,640	DOM	327				



430 EAST 58TH ST #51A

Sutton Place

TYPE	CONDO	STATUS	CONTRACT	ASK	\$6,525,000	INITIAL	\$7,425,000
SQFT	2,090	PPSF	\$3,123	BEDS	3	BATHS	3
FEES	\$6,591	DOM	N/A				



1112 PARK AVE #6A

Upper East Side

TYPE	COOP	STATUS	CONTRACT	ASK	\$6,495,000	INITIAL	N/A
SQFT	N/A	PPSF	N/A	BEDS	4	BATHS	4
FEES	\$6,555	DOM	N/A				



235 WEST 75TH ST #820

Upper West Side

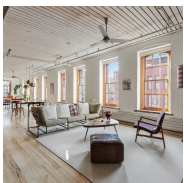
TYPE	CONDO	STATUS	CONTRACT	ASK	\$6,395,000	INITIAL	\$7,850,000
SQFT	3,214	PPSF	\$1,990	BEDS	5	BATHS	5.5
FEES	\$10,447	DOM	748				



133 EAST 64TH ST #9A

Lenox Hill

TYPE	COOP	STATUS	CONTRACT	ASK	\$6,295,000	INITIAL	\$6,950,000
SQFT	4,000	PPSF	\$1,574	BEDS	5	BATHS	5
FEES	N/A	DOM	61				



463 GREENWICH ST #5

Tribeca

TYPE	COOP	STATUS	CONTRACT	ASK	\$6,000,000	INITIAL	\$6,000,000
SQFT	N/A	PPSF	N/A	BEDS	3	BATHS	2
FEES	\$1,700	DOM	17				

Compass is a licensed real estate broker and abides by Equal Housing Opportunity laws. All material presented herein is intended for informational purposes only. Information is compiled from sources deemed reliable but is subject to errors, omissions, changes in price, condition, sale, or withdrawal without notice. No statement is made as to the accuracy of any description. All measurements and square footages are approximate. This is not intended to solicit property already listed. Nothing herein shall be construed as legal, accounting or other professional advice outside the realm of real estate brokerage.



44 LAIGHT ST #2A

Tribeca

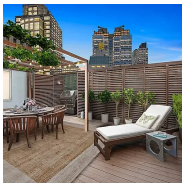
TYPE	CONDO	STATUS	CONTRACT	ASK	\$5,995,000	INITIAL	\$5,995,000
SQFT	4,012	PPSF	\$1,495	BEDS	3	BATHS	3
FEES	\$7,321	DOM	152				



100 BARCLAY ST #22C

Tribeca

TYPE	CONDO	STATUS	CONTRACT	ASK	\$5,650,000	INITIAL	\$5,950,000
SQFT	2,712	PPSF	\$2,084	BEDS	4	BATHS	4
FEES	\$9,284	DOM	349				



525 BROOME ST #PH6

Soho

TYPE	CONDO	STATUS	CONTRACT	ASK	\$5,495,000	INITIAL	\$5,495,000
SQFT	2,500	PPSF	\$2,198	BEDS	4	BATHS	3.5
FEES	\$4,573	DOM	82				



1 WEST 67TH ST #606/607

Upper West Side

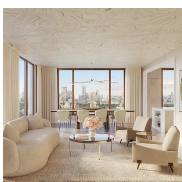
TYPE	COOP	STATUS	CONTRACT	ASK	\$5,450,000	INITIAL	\$6,850,000
SQFT	N/A	PPSF	N/A	BEDS	2	BATHS	3
FEES	\$7,347	DOM	147				



721 5TH AVE #34EF

Midtown

TYPE	CONDO	STATUS	CONTRACT	ASK	\$5,250,000	INITIAL	\$5,495,000
SQFT	2,222	PPSF	\$2,363	BEDS	2	BATHS	2.5
FEES	\$10,357	DOM	190				



201 EAST 74TH ST #14A

Lenox Hill

TYPE	CONDO	STATUS	CONTRACT	ASK	\$5,000,000	INITIAL	\$5,000,000
SQFT	2,171	PPSF	\$2,304	BEDS	3	BATHS	3.5
FEES	\$7,383	DOM	115				

Compass is a licensed real estate broker and abides by Equal Housing Opportunity laws. All material presented herein is intended for informational purposes only. Information is compiled from sources deemed reliable but is subject to errors, omissions, changes in price, condition, sale, or withdrawal without notice. No statement is made as to the accuracy of any description. All measurements and square footages are approximate. This is not intended to solicit property already listed. Nothing herein shall be construed as legal, accounting or other professional advice outside the realm of real estate brokerage.